



interlogix

SECURITY & LIFE SAFETY GROUP

CADDX | ESL | GBC | ITI | KALATEL | SENTROL

SECURITY SYSTEM NOTES

Installing/Service Company _____

For Service Call _____

Central Station _____

Duress Code _____

FUNCTION CODES

<u>Function Code</u>	<u>Controls Function</u>
_____	_____
_____	_____
_____	_____
_____	_____
_____	_____

This system is is not partitioned.

EMERGENCY ACTIVATION KEYS (check if enabled)

Fire Auxiliary Emergency Police

PROGRAMMED FUNCTIONS

Abort Delay Cancel Alarm Forced Arming
 Auto Bypass Change Partitions Group Bypass
 Auto Instant Chime Quick Arm
 Battery Test Communicator Test Re Exit
 Siren Test

ENTRY / EXIT DELAY TIMES

Exit Delay Time _____ Secondary Exit Delay Time _____
Entry Delay Time _____ Secondary Entry Delay Time _____

ZONE DESCRIPTIONS

01 _____ 05 _____
02 _____ 06 _____
03 _____ 07 _____
04 _____ 08 _____

This manual is furnished to help you understand your security system and become proficient in its operation. All users of your security system should read and follow the instructions and precautions in this booklet and, if possible, practice on the keypad control while your professional installer is on site. Failure to do so could result in the security system not working properly. This booklet should be kept in an accessible location for the life of the security system. If you do not understand any part of this manual you should notify your installing company shown on page 1.

The SECURITY CONTROL can be turned on (ARMED) and off (DISARMED) by entering a 4 or 6 digit code into the Keypad Control, which is similar to a telephone keypad. If your Security Control has been so programmed, you may be able to turn on (ARM) your System by simply double pressing the [AWAY], [STAY] or [NIGHT] key. The system must always be disarmed using a 4 or 6 digit code. The LED keypad includes up to 18 lights and a built-in electronic sounder. These provide specific information relating to the status of the security system, which is described in the booklet. Understanding what the lights and sounds mean will help you to easily operate your system.

Keep in mind, the level of security you will obtain with this system relates specifically with two major factors:

1. The quantity, quality and placement of security devices attached to this system.
2. The knowledge you have of the security system and how that knowledge is utilized in a weekly test of the complete system.

You should be aware of the following facts when preparing a safety/security plan for your home/business.

- Your security system is an electronic device and is subject to failure or malfunction. Do not rely on it as your single source of security.
- Your system should be tested weekly.
- Your system will not work without power.
- Warning devices will need to be loud enough, wired correctly, and properly placed to provide notification of an alarm event.
- Smoke and heat detectors may not detect heat and smoke in all situations.
- Use qualified security professionals to install and maintain your security system.
- It may be possible to arm the security system without the backup battery connected. Your periodic test should be done with AC Power removed to verify the battery is connected and adequately charged.
- Care should be taken to plug in and restrain the AC Transformer after testing.

Please read the following information and instructions carefully before operating your security control system.

TABLE OF CONTENTS

GLOSSARY OF TERMS	4
UNDERSTANDING THE LIGHTS	5
<i>ABORT LIGHT</i>	5
<i>AWAY / STAY / NIGHT KEYS</i>	5
<i>BYPASS KEY</i>	5
<i>CHIME LIGHT</i>	5
<i>FIRE LIGHT</i>	5
<i>POWER LIGHT</i>	5
<i>READY LIGHT</i>	5
<i>SERVICE LIGHT</i>	5
<i>ZONE LIGHT</i>	5
EMERGENCY ACTIVATION KEYS	6
KEYPAD FUNCTIONS	6
<i>ARMING YOUR SYSTEM IN THE "AWAY" MODE</i>	6
<i>ARMING YOUR SYSTEM IN THE "STAY" AND "NIGHT" MODES</i>	7
<i>USING THE QUICK ARM</i>	7
<i>CHANGING MODES WHILE SYSTEM IS ARMED</i>	7
<i>DISARMING THE SYSTEM</i>	8
<i>ABORT FEATURE</i>	8
<i>TURNING THE DOOR CHIME ON AND OFF</i>	8
<i>BYPASSING ZONES</i>	8
<i>GROUP BYPASS</i>	9
<i>UNBYPASSING</i>	9
ADDING AND CHANGING USER CODES	9
ASSIGNING USER CODE AUTHORITY LEVELS	10
OTHER KEYPAD FUNCTIONS	11
<i>SETTING THE KEYPAD TONE</i>	11
<i>VIEW ALARM MEMORY</i>	11
<i>TEST FUNCTION</i>	11
<i>RESET FUNCTION</i>	12
<i>SET SYSTEM DATE</i>	12
<i>SETTING THE SYSTEM CLOCK</i>	12
<i>SETTING THE KEYPAD LIGHTING</i>	13
SERVICE MENU	13
KEYPAD CONTROL TONES (BEEPS)	14
EMERGENCY EVACUATION PLANS	15

GLOSSARY OF TERMS

Abort Delay	An option that allows a delay in reporting to the central station.
Authority Level	The level of access an individual has when using an alarm panel.
Central Station	The location where alarm data is sent during an alarm report.
Chime Feature	An option that allows the keypad to sound a ding-dong whenever an entry/exit door is opened.
Codes	Can be either User Codes (relating to a person) or Function Codes (a toggle switch to turn specific functions on/off). NOTE: A system may have either 4-digit codes or 6-digit codes, but not a mixture of the two.
Duress Code	An option that allows a special code to be sent to the central station that indicates the alarm system is being operated under duress.
Forced Arming	An option that allows the system to be turned on (ARMED) with one or more zones open. A system that is ready to be "force armed" will flash the <i>ready light</i> . (Note: Those zones that are not ready will not create an alarm.)
Function Code	A Function Code is either a four- (4) or six- (6) digit code that has been programmed by the installer to operate a device.
Group Bypass	An option that allows the user to bypass multiple zones with a single operation.
Instant/Delay	An option that allows an instant alarm condition for Entry/Exit doors, or grants a delay to allow someone to enter/exit the building without an alarm, or before entering a user code to disarm.
Master Code	A master arm/disarm code that can program other user codes.
Partitioned System	A system divided into multiple areas in which its own user or users control each area.
Perimeter	The outer edge of the protected area.
Quick Arm	An option that allows you to turn on (arm) the security system by double pressing either the [AWAY], [STAY] or [NIGHT] key on the keypad control (for ARMING only) as programmed by the installing company.
User Code	A four- (4) or six- (6) digit entry code used to arm or disarm the system.

UNDERSTANDING THE LIGHTS

ABORT LIGHT

The *abort light* will flash during an abort delay time. If a code is entered while this light is flashing, all abortable reports will stop the communication process. **Note: The abort feature must be enabled.** Entering a code during or after an alarm report to the central station will cause the *abort light* to come on. It will stay on until the central station has received the cancel report. **Note: The cancel feature must be enabled.**

AWAY - STAY - NIGHT KEYS

The *away, stay, and night keys* are “on” when the system is armed to one of these corresponding modes. The *armed, stay, and night keys* are “off” when it is disarmed. The *armed, stay, and night keys* will flash when there has been an alarm during the previous arm cycle.

BYPASS KEY

The *bypass key* is illuminated when any zone in this keypad's partition is bypassed. The zone(s) that is bypassed will also be illuminated. If the *bypass key* is “off”, no zones are bypassed.

CHIME LIGHT

The *chime light* is “on” when the chime feature is “on”; “off” otherwise.

FIRE LIGHT

A steady *fire light* means a fire zone has been faulted. A rapidly flashing *fire light* means that a fire zone is in a trouble condition.

POWER LIGHT

The *power light* is on if the primary power is on. The *power light* will flash if the system has a low battery condition.

READY LIGHT

The *ready light* is “on” when the system is ready to arm and “flashes” if ready to force arm. The *ready light* is off when the system is not ready to arm because of a zone(s) being faulted.

SERVICE LIGHT

The service light is “on” when the system requires service. Press [*]-[2] to determine the service condition then refer to page 13 for details.

ZONE LIGHT

The *zone lights* are “off” when everything is normal. A *zone light* will be “on” if the zone has been bypassed. If a *zone light* is “flashing”, that zone is in alarm or has been faulted. If a *zone light* is “flashing” rapidly, it means that the zone is in a trouble condition. Trouble conditions are:

Tamper Hardware Low Battery Loss of Supervision

(A combination of Alarm/Fault and Tamper/Trouble will produce a rapid “flashing” light for a short period of time, followed by a slow “flashing” light.)

EMERGENCY ACTIVATION KEYS



Fire



Auxiliary Emergency



Police

NOTES: You must hold these keys for 2 seconds to activate these functions. Your system may not be programmed for these activation keys (see page 1). You should press these keys only in an emergency situation that requires response by emergency personnel. If your system is programmed for these functions, the following reports can be sent.

Fire Key – This key can activate the fire alarm when pressed for two seconds. If your system is connected to a monitoring center, an emergency report could be sent to that center.

Auxiliary Emergency Key – This key can activate the auxiliary alarm when pressed for two seconds. If your system is connected to a monitoring center, an emergency report could be sent to that center.

Police (Panic/Hold-Up) Key - This key can sound a local audible alarm when pressed for two seconds. If your system is connected to a monitoring center, an emergency report could be transmitted to that center. **NOTE:** Some Panic/Hold-Up alarms are programmed to be silent at the protected site while reporting an alarm to the monitoring center. Check with your installing company to determine how your security system will respond to the Panic/Hold-Up activation.

KEYPAD FUNCTIONS

ARMING YOUR SYSTEM IN THE “AWAY” MODE

AWAY is used when the user is away from the premise and wants the interior protected.

- Close all protected doors and windows.
 - *Ready light* will be on or flashing when all protected zones and sensors are secure. **NOTE:** If any zones are bypassed, a sensor in that zone can be violated without affecting the *ready light*.
 - The security system will not arm if the *ready light* is not on or flashing.
 - If the *power light* is off, you have no AC power. Restore power if possible. If not, contact your installing company listed on page 1 of this booklet for service.
- Enter your 4 or 6 digit user code to arm the system.
 - The *away key* will illuminate steady. The *stay* and *night keys* will flash during the exit delay.
 - You may now leave the building.

ARMING YOUR SYSTEM IN THE “STAY” AND “NIGHT” MODES

STAY is used when the user is inside the premise and wants protection around the perimeter.

1.
 - Close all protected doors and windows.
 - *Ready light* must be on or flashing when all protected zones and sensors are secure. The system will not arm if the *ready light* is not on or flashing.
 - **NOTE:** If any zones are bypassed, a sensor in that zone can be violated without affecting the *ready light*.
 - If the *power light* is off, you have no AC power. Restore power if possible. If not, contact your installing company listed on page 1 of this booklet for service.
2.
 - Enter your 4 or 6 digit user code.
 - If “Auto Bypass” is enabled, all interior zones will be bypassed if you do not leave through a designated entry/exit door. Omit Step 3.
3.
 - Press **[STAY]**.
 - The *stay key* will illuminate indicating that all interior zones are bypassed. (All interior devices will bypass automatically, giving the user freedom of movement within the interior area.) The *away* and *night* keys will flash during the exit delay.
 - The *bypass key* will illuminate if any zone(s) are bypassed. If any zone(s) have been bypassed previously by the user, the light(s) corresponding to the bypassed zone(s) will illuminate, alerting the user that a zone(s) may be unprotected and can be faulted without an alarm.
4. To toggle between the STAY and NIGHT mode, double press the key corresponding to the mode you desire.
5. To upgrade from the STAY or NIGHT mode to the AWAY mode, double press **[AWAY]**. **Note:** Once the AWAY mode is activated, the system must be disarmed to revert to the STAY or NIGHT mode.

USING THE QUICK ARM (Optional, see page 1)

The Quick Arm feature may be used if it is enabled. Quick Arm will allow the user to arm the security system in the AWAY, STAY, or NIGHT mode by pressing the corresponding key twice. This feature is used for ARMING ONLY, and will not disarm the security system. This is ideal for a maid or baby sitter, etc.

CHANGING MODES WHILE SYSTEM IS ARMED (Optional, see page 1)

Double pressing the **[AWAY]**, **[STAY]**, or **[NIGHT]** key will change to the corresponding mode. Once the AWAY mode is entered, the system must be disarmed to change modes.

DISARMING THE SYSTEM

When you enter the protected area through one of the designated Entry/Exit doors, the keypad control will sound a continuous tone for the duration of the entry delay time, or until you enter a valid code. The *away*, *stay* and *night* keys will go off and the tone will stop. The security system is now DISARMED. If a valid code is not entered before the end of the entry delay, an alarm will occur. **(NOTE: If the *away*, *stay* or *night* keys are flashing during the entry delay, the alarm system has been activated in your absence. Leave the building immediately and call your alarm company and/or the police from a safe location.)**

ABORT FEATURE (Optional, see page 1)

The *abort light* will flash during an abort delay time. If a code is entered while this light is flashing, all abortable reports will stop the communication process. Entering a code during or after an alarm report to the central station will cause the *abort light* to come on. It will stay on until the central station has received the cancel report.

TURNING THE DOOR CHIME ON AND OFF

The door chime is turned on or off by pressing [*]-[1] while the system is in the disarmed state. If the chime is "on", the *chime light* will be illuminated. If the chime is "off", the *chime light* will be off. Each time [*]-[1] is pressed it will toggle the chime feature on/off and produce a momentary ding-dong sound.

BYPASSING ZONES

If you wish to bypass one or more zones, it must be done while the system is in the disarmed state.

1. Press [BYPASS].
2. Enter user code, if required. The *bypass key* flashes.
3. Enter the zone number you wish to bypass, i.e. press [4] for zone 4.
4. Press [BYPASS] again.
5. The corresponding *zone light* will illuminate indicating the zone has been bypassed. Repeat steps 3 and 4 for any other zone(s) that need to be bypassed.
6. Press [BYPASS] again -or- press [#] to exit the Bypass Mode. The *bypass key* will stop flashing upon exiting the Bypass Mode.

GROUP BYPASS

Pressing [BYPASS]-[0]-[BYPASS] will bypass all zones that are designated as group bypass zones. Press [BYPASS] again to exit group bypassing.

UNBYPASSING

To manually unbyypass zones, perform the bypassing procedure on a zone that is already bypassed. The corresponding light for that zone will go off when unbyypassed.

NOTE: All zones will automatically be unbyypassed each time the system is disarmed.

ADDING AND CHANGING USER CODES

Your system must be **Disarmed** to change user codes.

1. Press [*]-[5]-[“Master Arm/Disarm” Code].
NOTE: For partitioned systems, someone changing the code of another person must have access to all or more partitions than the user being changed.
2. The *ready light* will flash.
3. Enter the “user number”. (Depending on the control panel in your system, this will be either a 2-digit or 3-digit number. Remember to enter leading zeros such as [0]-[3] for user 3, or [0]-[5]-[2] for user 52).
4. The zone lights will illuminate specifying the first digit of the “user code”. (Lights 1-8 on = code is blank, lights 1-8 off = “0”, lights 1 and 8 = “9”).
5. To DELETE a user code, enter [*]-[*]-[*]-[*] for a 4-digit code, or [*]-[*]-[*]-[*]-[*]-[*]-[*]-[*] for a 6-digit code.
6. The *ready light* will flash indicating you are back at Step 2 above. If the code is rejected, the sounder will beep 3 times.
7. Return to step 3 if another “user code” is to be programmed.
8. Press [#] while the *ready light* is flashing to exit the User Code Programming Mode.

ASSIGNING USER CODE AUTHORITY LEVELS

Assign authority levels to users by following the steps below. Assign user codes before assigning authority levels.

1. Press **[*]-[6]-["Master Arm/Disarm Code"]**.
Someone changing the authority of another person can only add or remove partition authorization for partitions to which they have access.
2. The *ready light* will flash.
3. Enter the "user number" to be assigned authority. (Depending on the control panel in your system, this will be either a 2-digit or 3-digit number. Always enter leading zeros such as **[0]-[3]** for user 3, or **[0]-[5]-[2]** for user 52).
The *ready light* is constant and the *instant light* will flash.
4. Illuminated lights indicate the authority levels assigned to this code. An explanation of the lights is listed in the following table. You may toggle (turn on/off) the authority level by pressing the number for that authority level.

LIGHT	AUTHORITY LEVELS IF LIGHT 8 IS OFF
1	Reserved (Note: Do not change if on.)
2	Arm Only
3	Arm Only After Closing Time
4	Master Arm/Disarm (can program other codes)
5	Arm/Disarm
6	Bypass Zones
7	Open / Close Reporting
8	If this light is on, this code is programmed as a function code. Do not change! Press #[#]-[#] to exit.

5. Press **[*]**. The *ready light* will flash. This moves you to the partition enable. (The user has access in partitions that are illuminated.)
6. The illuminated numbers indicate each partition where the user has access. To change any of the partitions where the user has access, press numbers corresponding to areas where you want to give the user access or deny access. (Example: If zone light #2 is lit, then the user is assigned access to partition #2. By pressing **[2]**, the light will go off, denying access to partition #2.

Light	Partition	Light	Partition
1	Partition 1	5	Partition 5
2	Partition 2	6	Partition 6
3	Partition 3	7	Partition 7
4	Partition 4	8	Partition 8

7. When the partitions are assigned, press [*****]. This returns you to Step 2. At this point you may enter another user number to assign authority level. Repeat Steps 3 - 7 until you have assigned authority levels to all user numbers.
8. Press [**#**] to exit the Assigning Authority Level Program.

OTHER KEYPAD FUNCTIONS

SETTING THE KEYPAD TONE

1. Press [*****]-[0]. Keypad is now in the "Adjust Tone" mode.
2. Press [1] to make the keypad sounder go to higher tones, and press [2] to make the keypad sounder go to lower tones.
3. When the desired tone is reached, press [**#**] to set this tone and exit from the "Adjust Tone" mode.

VIEW ALARM MEMORY

1. Press [*****]-[3]. The zone(s) that created the last alarm will be displayed on the keypad.
2. The **ALARM MEMORY** feature will flash those zones that created alarms and will light steady those zones that were bypassed during the last alarm.

TEST FUNCTION – Optional

If programmed, this function will perform a battery test, communicator test, and/or a siren test. Alarms and reports will not be sent, unless a communicator test is performed at which time a test signal will be sent.

1. Press [*****]-[4]. The test will be performed as programmed.
2. If the siren test is performed, enter a user code to silence the siren.

RESET FUNCTION

This function is used to reset Smoke Detectors, Zone Troubles, and Zone Tamper. Your system must be **Disarmed** to use the Reset function.

1. Press **[*]-[7]**. Resets have now been performed.
2. If the keypad begins beeping, the reset did not execute properly. Enter your code to silence the keypad. Wait a few minutes and repeat step 2 to attempt another reset. If the keypad still beeps after repeated attempts, please contact your installer.

SET SYSTEM DATE

1. Press the **[*]-[9]-[6]**-["Master Code"].
2. Enter the "Day of Week "

1=Sunday	3=Tuesday	5=Thursday	7=Saturday
2=Monday	4=Wednesday	6=Friday	
3. Enter the "Month Code". Must always be two (2) digits.

01 = January	02 = February	03 = March	04 = April
05 = May	06 = June	07 = July	08 = August
09 = September	10 = October	11 = November	12 = December
4. Enter the "Day Code". Must always be two (2) digits.
Example: The 5th would be entered as **[0]-[5]**.
5. Enter the last two digits of the "Year Code".
Example: For 2007 enter **[0]-[7]**.

SETTING THE SYSTEM CLOCK

1. Press **[*]-[9]-[7]**-["Master Code"].
2. Enter the "hour code" which must be two (2) digits. NOTE: The clock is a 24-hour clock. Refer to the following table.
3. Enter the "minutes code" which must be two (2) digits.
Example: 7 minutes after would be entered **[0]-[7]**.

Time	Hour Code	Time	Hour Code	Time	Hour Code
12:00 Midnight	00	8:00 AM	08	4:00 PM	16
1:00 AM	01	9:00 AM	09	5:00 PM	17
2:00 AM	02	10:00 AM	10	6:00 PM	18
3:00 AM	03	11:00 AM	11	7:00 PM	19
4:00 AM	04	12:00 Noon	12	8:00 PM	20
5:00 AM	05	1:00 PM	13	9:00 PM	21
6:00 AM	06	2:00 PM	14	10:00 PM	22
7:00 AM	07	3:00 PM	15	11:00 PM	23

SETTING THE KEYPAD LIGHTING

1. Press **[*]-[9]-[1]**. The *service light* will flash.
2. Press the **[1]** and **[2]** keys to lighten or darken the illumination behind the buttons. It is usually easier to set this adjustment in a darkened room.

SERVICE MENU

The *service light* will be “on” if the security system requires service. If the *service light* is “on”, press **[*]-[2]** to determine the service condition. One or more zone lights will illuminate indicating what service(s) is required. Call your service provider immediately for these problems. Below is a listing of what each light means in a service condition.

LIGHT	PROBLEM								
1	SYSTEM FAULT - Press [1] . The <i>zone light(s)</i> that is illuminated corresponds to the system fault(s) below: <table border="0" style="width: 100%;"> <tr> <td style="width: 50%;">1 Over Current Fault</td> <td style="width: 50%;">5 Expander Low Battery</td> </tr> <tr> <td>2 Siren Trouble</td> <td>6 Expander Box Tamper</td> </tr> <tr> <td>3 Box Tamper</td> <td>7 Expander Trouble</td> </tr> <tr> <td>4 Expander Power</td> <td>8 Ground Fault</td> </tr> </table> Note: Faults 1 & 2 are global in nature and will affect all partitions of a multi-partition system. Press [#] to return to the 1 of 8 <i>service lights</i> .	1 Over Current Fault	5 Expander Low Battery	2 Siren Trouble	6 Expander Box Tamper	3 Box Tamper	7 Expander Trouble	4 Expander Power	8 Ground Fault
1 Over Current Fault	5 Expander Low Battery								
2 Siren Trouble	6 Expander Box Tamper								
3 Box Tamper	7 Expander Trouble								
4 Expander Power	8 Ground Fault								
2	ZONE TAMPER - Press [2] and the <i>zone light(s)</i> will illuminate showing the zone(s) that are tampered. Press [#] to return to the 1 of 8 <i>service lights</i> .								
3	ZONE LOW BATTERY - Press [3] . The <i>zone light(s)</i> will illuminate showing which zone(s) has a low battery. This only applies to wireless zones. Press [#] to return to the 1 of 8 <i>service lights</i> .								
4	ZONE LOSS OF SUPERVISION - Press [4] and the <i>zone light(s)</i> will illuminate showing which zone(s) has loss of supervision. This only applies to wireless zones. Press [#] to return to the 1 of 8 <i>service lights</i> .								

5	ZONE TROUBLE - Press [5] and the <i>zone light(s)</i> will illuminate showing which zone(s) has a trouble condition. Press [#] key to return to the 1 of 8 <i>service lights</i> .
6	TELEPHONE LINE TROUBLE/LINE CUT – Press [6]. The zone light(s) will illuminate as they correspond to these service conditions: 1-5 = Reserved 6 = Telephone Line Trouble / Line Cut 7 = Aux communication device failure The <i>service light</i> will remain lit until the trouble clears and a user code is entered. * SEE NOTE.
7	FAILURE TO COMMUNICATE – Illuminated when there is a failure to communicate between your system and the central station. * SEE NOTE.
8	LOSS OF SYSTEM TIME - Illuminated when there has been a loss of power and your system clock needs to be reset. Instructions are on page 12. * SEE NOTE.
TO EXIT THE SERVICE LIGHT MODE, PRESS [#]	

* NOTE to Lights 6,7,8: This fault is global in nature and will affect all partitions of a multi-partition system.

KEYPAD CONTROL TONES (BEEPS)

A sounder is built into the keypad. If programmed, your system keypad may sound for any of the following reasons:

- Beeps for all keypresses.
- Sounds a continuous tone during the Entry delay time.
- Pulses when a day zone is violated while the system is disarmed.
- Pulses when a FIRE zone has a trouble condition.
- Beeps 3 times for trying to arm with the “Ready” light off, if “Force Arming” has not been selected.
- Beeps for 1 second or emits a “ding-dong” sound for the “Chime” feature.
- Beeps during an exit delay; beeps rapidly for the last 10 seconds of an exit delay; and beeps 1 second at the end of the exit delay.
- Pulses when the armed status changes and the AC power is off.
- Pulses when the armed status changes and any zone(s) are bypassed.
- Pulses when the armed status changes and a low battery is detected.
- Pulses when the armed status changes and a Tamper condition is detected.
- Beeps to indicate Telephone Line Cut, if selected.
- Pulses when one or more of the following conditions are detected: Zone or Box Tamper, Low Battery, AC Power Fail, or Expander trouble.
- Beeps 3 times every minute indicating a low battery or missing transmitter is detected (if wireless device is in system). Entering code will suppress the sounder for 12 hours.

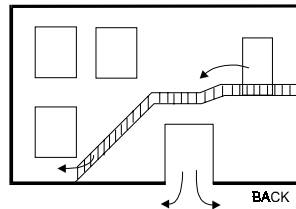
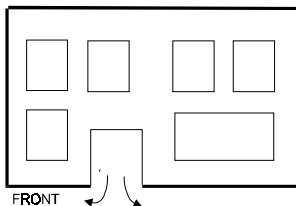
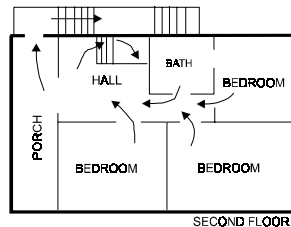
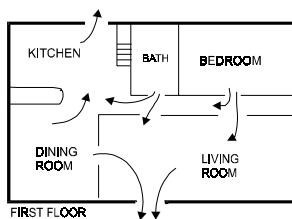
Entering a valid code will silence the keypad sounder when it is pulsing. The arm/disarm state of your system will not change when entering a code to silence a pulsing keypad sounder. Please contact your installer if a trouble condition exists.

EMERGENCY EVACUATION PLANS

An emergency evacuation plan should be established for an actual fire alarm condition. For example, the following steps are recommended by the National Fire Protection Association and can be used as a guide in establishing an evacuation plan for your building.

Draw up a floor plan of your home. Show windows, doors, stairs, and rooftops that can be used for escape. Indicate each occupant's escape routes. Always keep these routes free from obstruction. Determine two means of escape from each room. One will be the normal exit from the building. The other may be a window that opens easily. An escape ladder may have to be located near the window if there is a long drop to the ground below. Set a meeting place outdoors for a headcount of the building occupants.

Practice escape procedures. In a home, sleep with bedroom door closed; this will increase your escape time. If you suspect fire, test the door for heat. If you think it is safe, brace your shoulder against the door and open it cautiously. Be ready to slam the door if smoke or heat rush in. Practice escaping to the outdoors and meeting in an assigned spot. Call the Fire Department from a neighbor's phone. **NOTE:** After the installation of your Security System has been completed, notify your local Fire and Police Departments to give them your name and address for their records. Early warning fire detection is best achieved by the installation of fire detection equipment in all rooms. This equipment should be installed in accordance with the National Fire Protection Association's Standard 72. For additional information write the National Fire Protection Association, Batterymarch Park, Quincy, MA 02269. The following are examples of evacuation plans. A plan unique to your home or business should be drawn and memorized by each occupant.



SYSTEM NOTES



Caddx Controls, Inc.

LED KEYPAD USER'S MANUAL
1200EUA01 REV A (07-25-01)